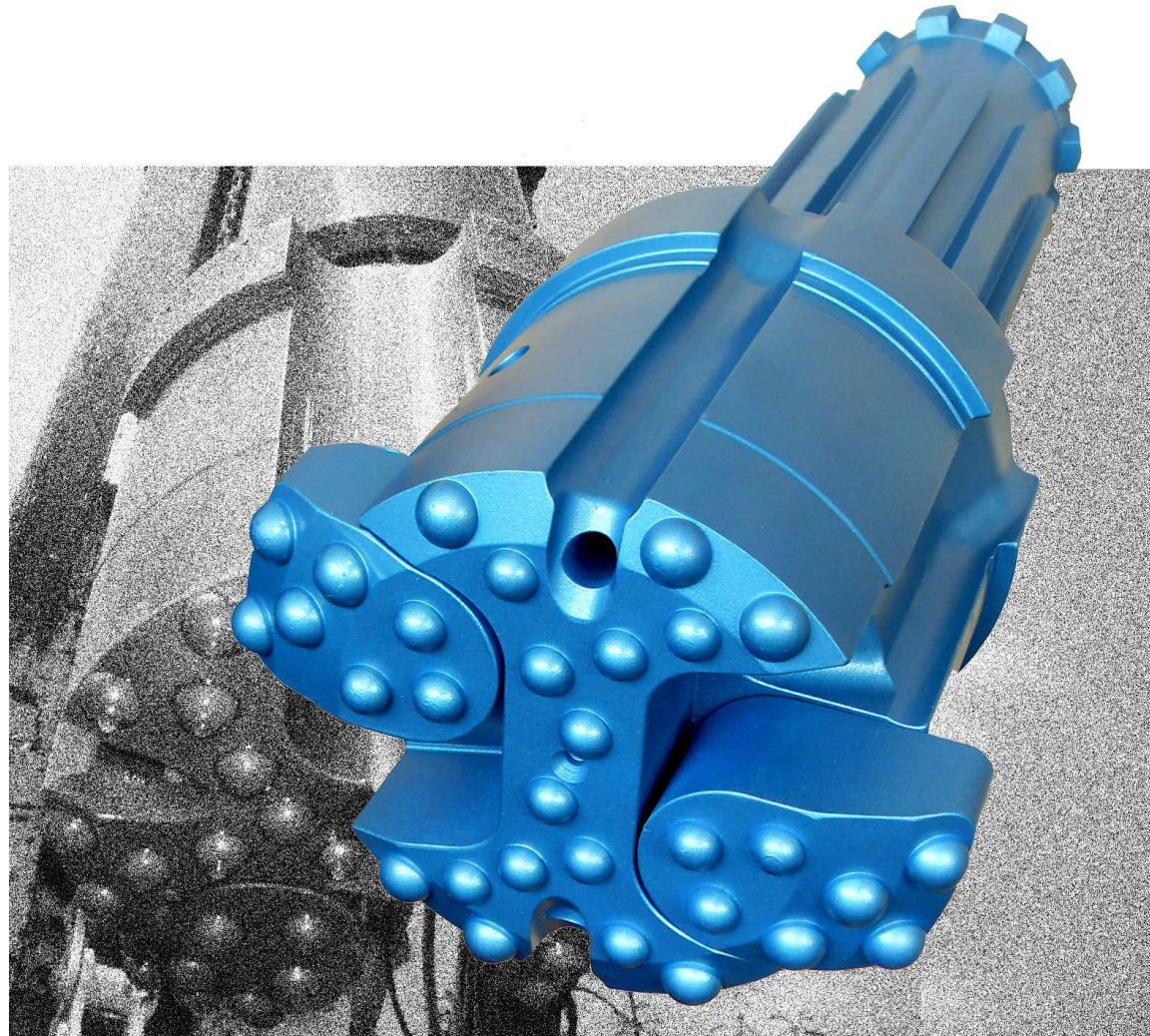


# PITMEC

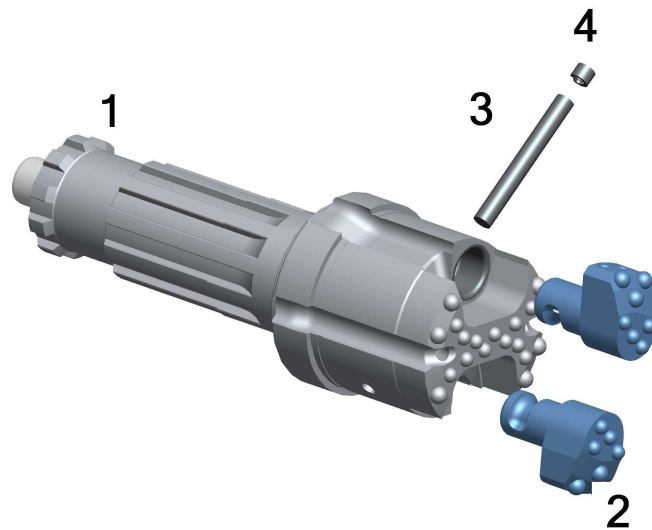
## THE PCON-E 178 CONCENTRIC UNDERREAMING SYSTEM



---

**CASING SIZE 219MM OD X 194MM ID DRILLING DIA. 235MM**

# PNEUMEC PCON-E 178 CONCENTRIC UNDERREAMING SYSTEM



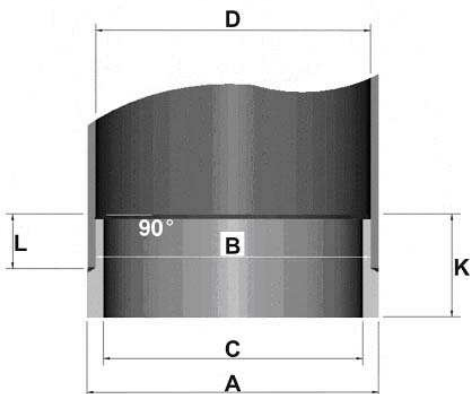
## PCON-E 178 PARTS LIST

1.	DRIVER BIT DHD360 SHANK	UGD178360PCE
2.	REAMER(2)	UBS178PCE
3.	LOCKING PIN	USP17850PCE
4.	SPLIT PIN	USP17851PCE
5.	COMPLETE SYSTEM	UCS178360PCE

## PCON-E 178 SPECIFICATIONS

UPPER BODY DIAMETER	192MM	CLOSED DIAMETER	179MM
REAMING DIAMETER	235MM	CASING SIZE	219MM OD X 194MM ID
SYSTEM LENGTH	527MM	SYSTEM WEIGHT	68KG

## PCON-E 178 CASING SHOES



DIA. A	219MM
DIA. B	192MM
DIA. C	180MM
DIA. D	194MM
L	44MM
K	95MM



### PNEUMEC COMPANY LIMITED

1st Floor, Tin On Sing Comm. Bldg., 41-43 Graham St. Central, H.K.  
 Tel : (852) 2178 9922 Fax : (852) 2178 9982  
 Website : www.pneumec.com email : info@pneumec.com